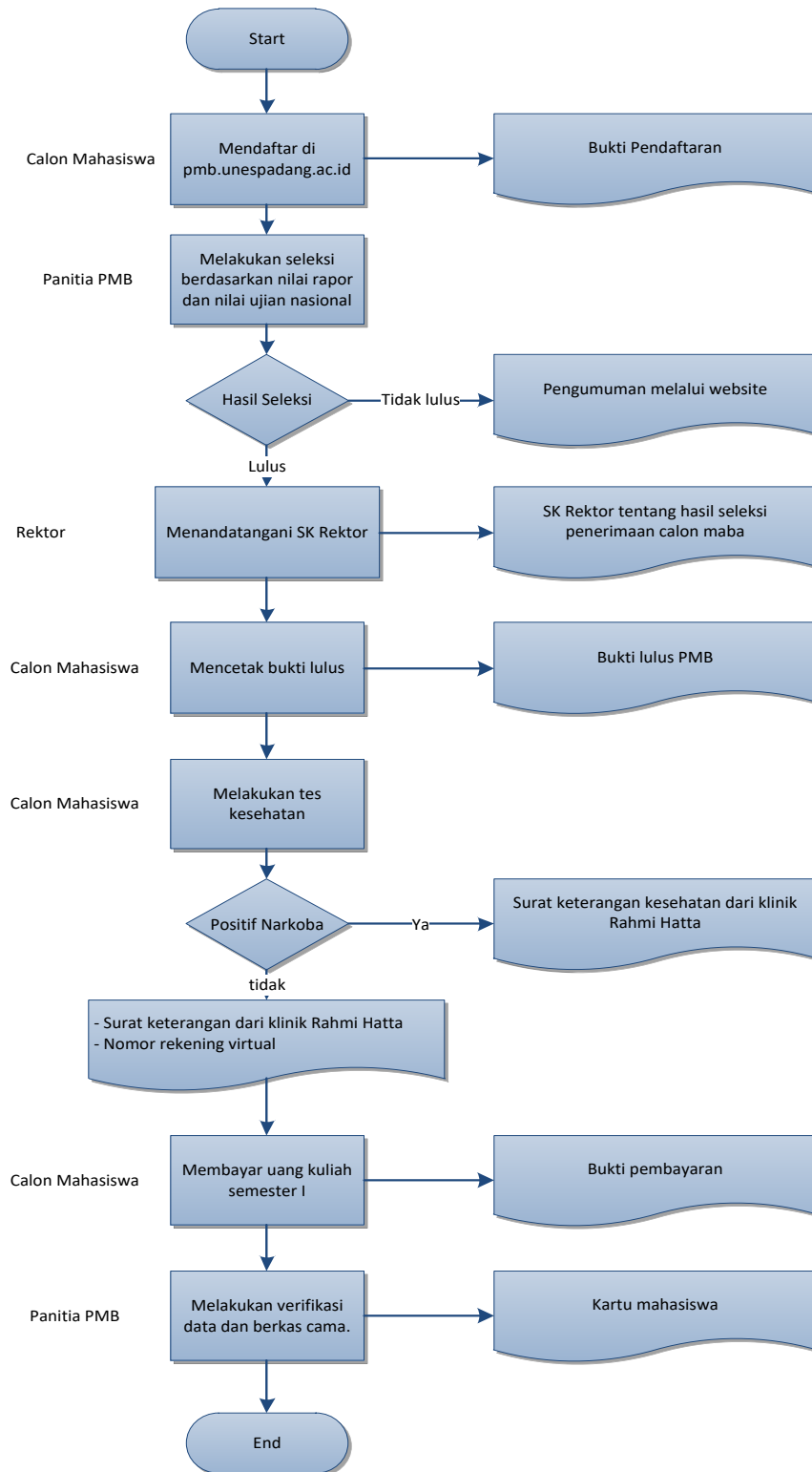
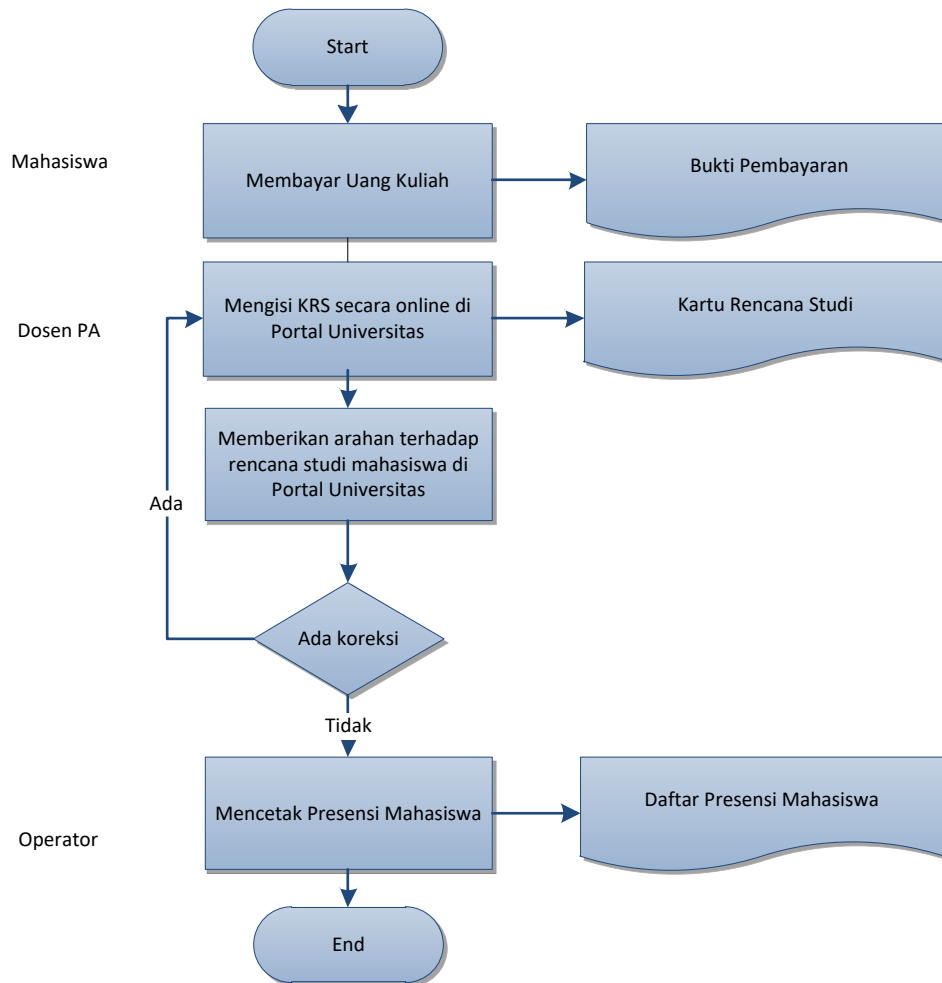


# ALUR DAN DIAGRAM SISTEM

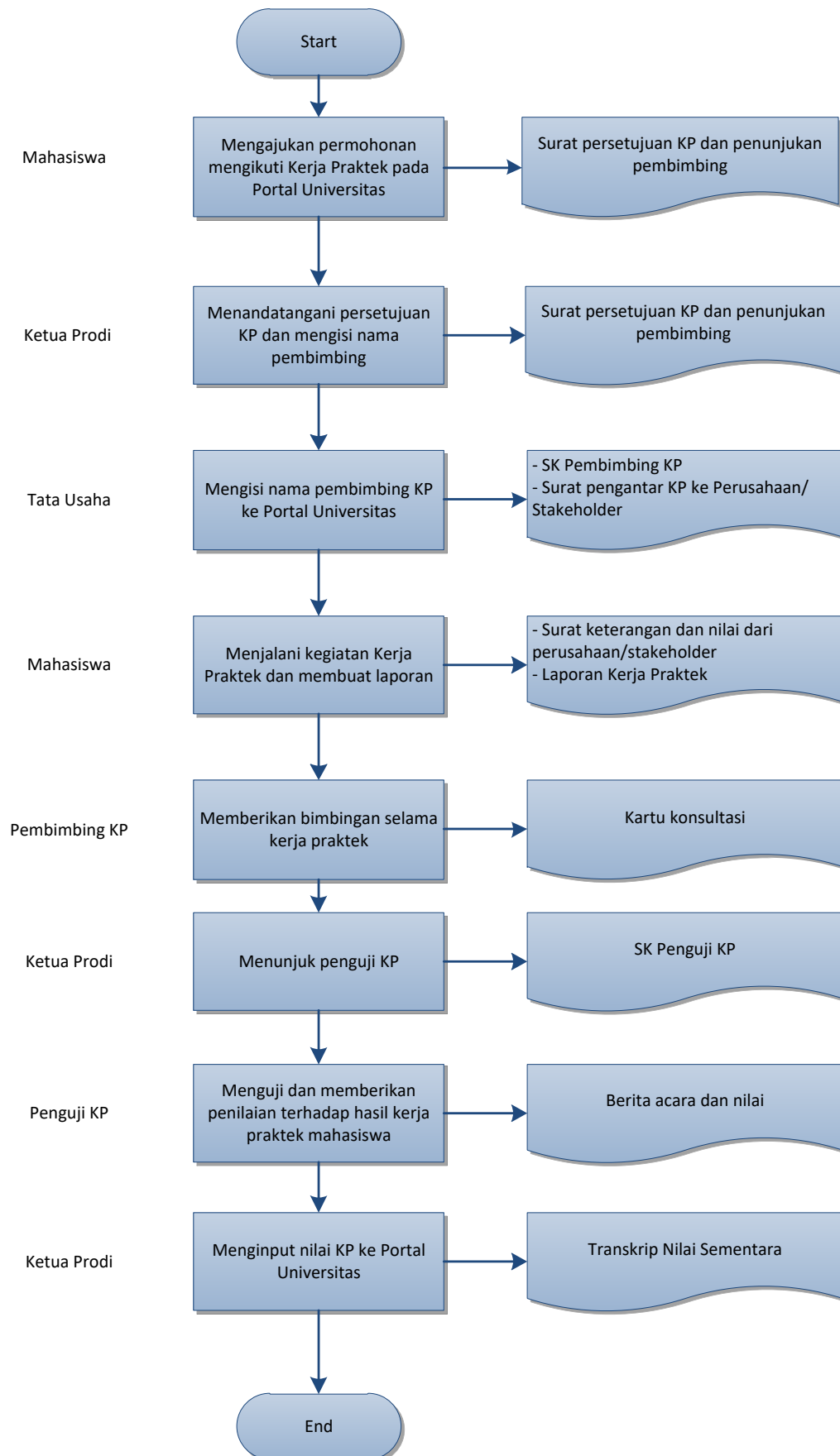
## 1. Penerimaan Mahasiswa Baru



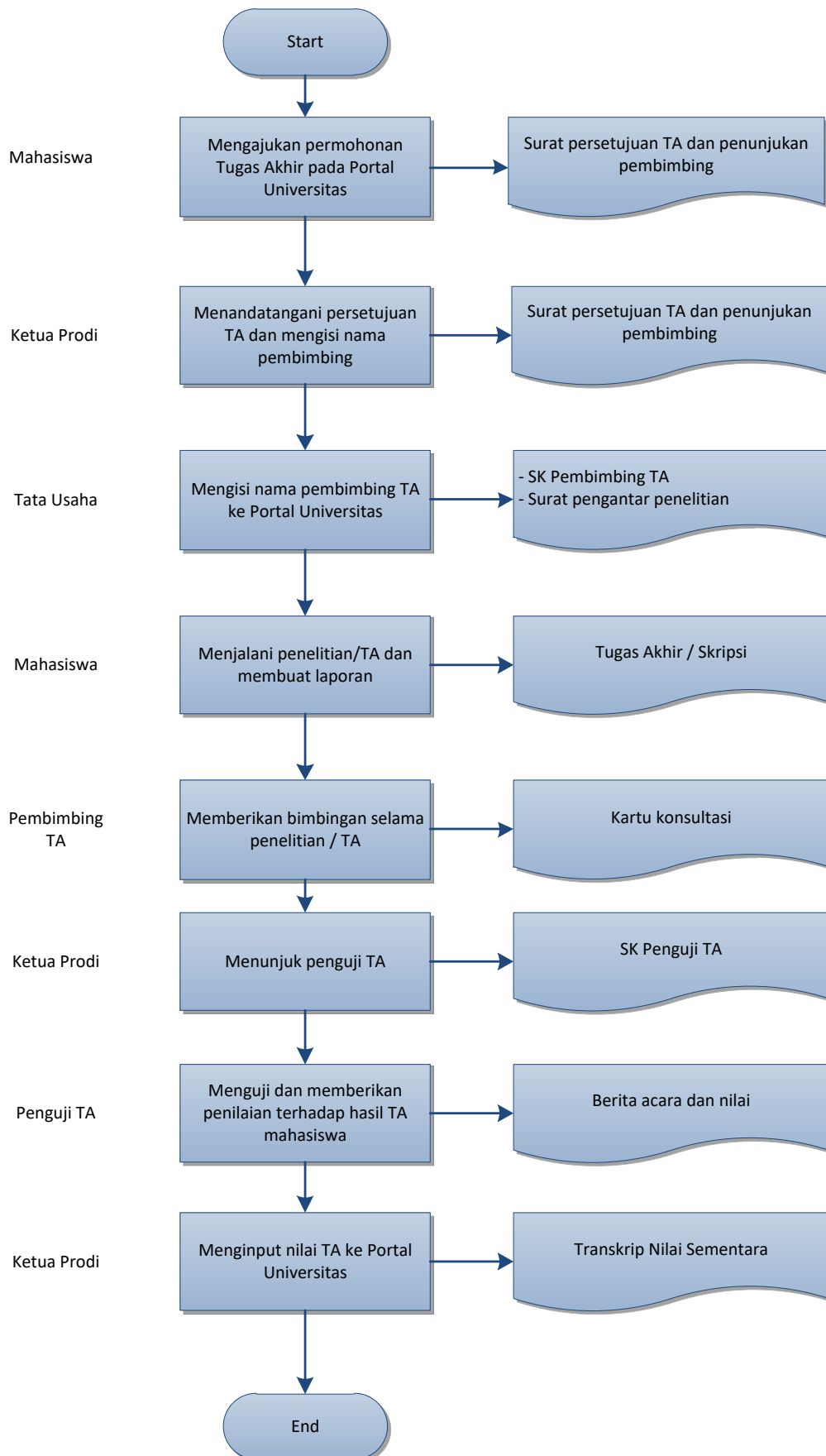
## 2. Administrasi Kartu Rencana Studi (KRS), Penasehat Akademik (PA) dan Cetak Presensi Mahasiswa



### 3. Kerja Praktek (KP)



#### 4. Tugas Akhir (TA)



## 5. Wisuda

